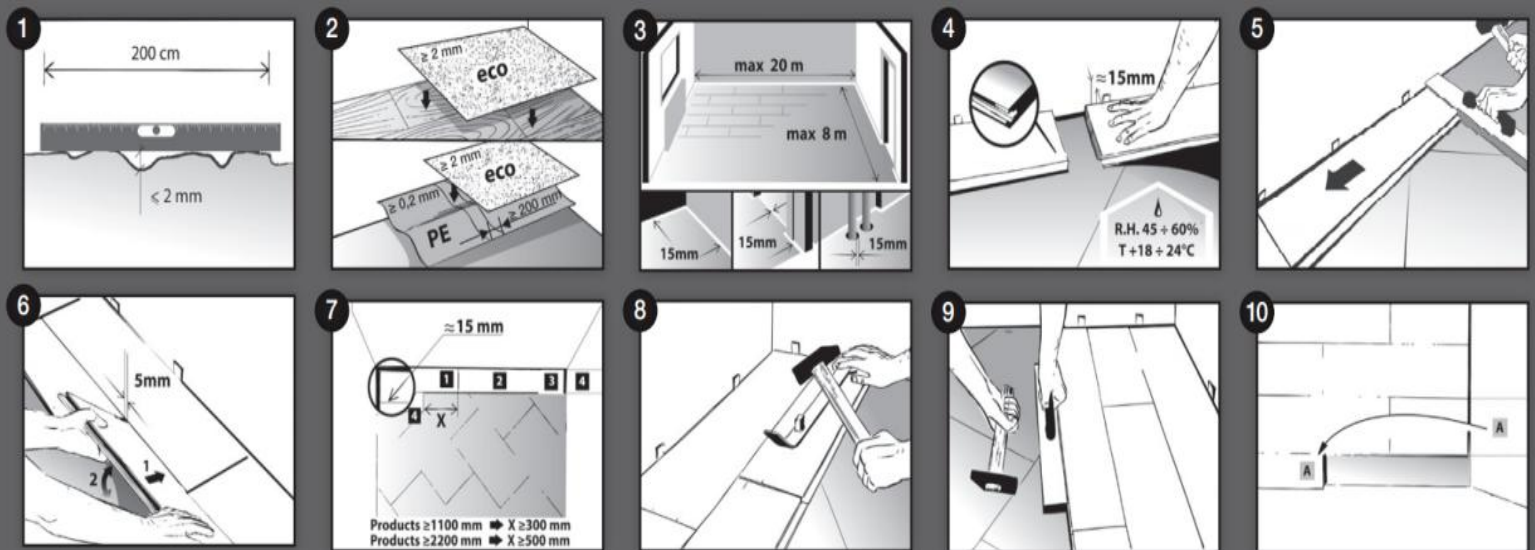


Norskë Wood Flooring

Installation Guide For Floating & Glue-Down Flooring



Before commencing work, please carefully read these installation instructions. Prior to laying carefully inspect all floorboards and plan the laying patterns. Floor installation should be conducted in daylight. All floorboards should be checked before and during installation. Laying floorboards with visible defects will void warranty. Damaged floorboards should be returned to the point of sale in order to be exchanged for new ones. Install the floor using professional parquet laying techniques and follow the manufacturer's installation instructions.

Claims will not be accepted if based on the following: Damage to the floorboards caused during installation, normal wear and tear, mechanical damage during use (scratches from sand, indentations and cracks due to ingress of liquids, etc.), noises associated with normal use, variations in colour and changes in shade over time due to exposure to sunlight. The flooring may differ in colour from the pattern displayed in store. Damage to flooring caused by improper installation or humidity, does not constitute grounds for warranty claim. Damage resulting from failure to use protection under furniture castors and legs such as roll-stop protective mats and felt pads in places where furniture legs exert pressure on the floor. The packets may contain short boards included as "starter boards". Floorboards should not be installed outdoor and in rooms with high humidity (e.g. laundry, bathroom). **General information:** Overall dimensions of the installed floor should not exceed 8 metre's in width and 20 meters in length. Otherwise, expansion gaps should be left between the floor surfaces. When laying the floor, separate individual rooms or asymmetric surfaces in one room. The floorboards should be laid and used at 45% - 60% relative humidity and at room temperature between +18°C and 24°C. Before installing the floor, measure subfloor moisture content and record the results in a protocol. The maximum allowable moisture content: for concrete 2% (CM method), anhydrite 0.5 % (CM method), wood 8%. When installing floating floors, it is recommended to lay damp insulation on all types of concrete subfloor. Where a suitable polythene vapour barrier is used, overlap any seams by at least 200 mm and securely tape to provide a seal. Flooring installation should begin with the laying of the underlay: corrugated cardboard by joining sheets at the edges; in case of natural cork or wood chip boards, leave 2mm gap between boards and 10mm gap between the boards and the wall. Remember to stagger the ends of the boards by at least 500mm in adjacent rows when installing 2.2m floorboards and by at least 300mm when installing 1.1m floorboards. When installing the floorboards, do not use the flooring straps.

Laying floor on adhesive: 1. Distribute adhesive using trapezoidal trowel, so that the adhesive evenly covers at least 60% of the board. 2. The subfloor should be primed and its strength must meet the following conditions: - peel strength of at least 1 MPa; - compression strength of at least 25 MPa. Only single component polyurethane or synthetic adhesives are allowed, which are recommended by the manufacturer for bonding of lacquered and oiled flooring suitable for underfloor heating. **DO NOT USE DISPERSION ADHESIVES!**

Laying floorboards on underfloor heating system: Whichever heating system is chosen, draw up a protocol confirming heating of the subfloor for 21 days before installing the floorboards. The document must be signed by a qualified flooring installer. If the floor is not installed immediately, re-set the heating at 21°C about two weeks before the installation and lay the floorboards at the same temperature. Before laying a floating floor, level out unevenness of the subfloor using substrate material recommended for use as an underlay for underfloor heating systems. **NOTE:** Warranty does not cover defects arising from excessive drying/heating of the floorboards by subjecting the flooring to temperatures higher than those recommended.

Skirting boards: Cover expansion gaps (at the wall) with decorative skirting boards. Skirting boards are fixed to the wall (do not fit the skirting boards to the flooring) using fixing brackets. **Care:** Floorboards are factory finished with UV lacquer, UV or natural oil. It is recommended that UV lacquered and UV oiled floorboards are cleaned and maintained using the dedicated care and cleaning agents. An additional coat of care oil should be applied to floors treated with UV or natural oil after installation. Regular care of oiled floors conceals minor wear and tear of everyday use. The greatest enemies of wooden floors are water and sand. In case of soiling of the floor, these should be carefully and gently removed. For daily maintenance and periodic renovation of natural oiled floors use products based on natural oils provided by the floorboard manufacturer only. **NOTE:** Before applying a new layer of oil be sure to carry out a test on a concealed area of the floor to assess whether or not there is a negative reaction of oil on the floorboard (for example, discoloration or peeling).