

timbermate excel

wood and laminate flooring underlay

With its **superior weight and density**, Timbermate Excel significantly **reduces in-room noise levels*** when used under wood and laminate floors. Independent research shows that 'in-room' acoustics can worsen if inferior or lightweight underlays are used. *'Drum sound' tests between 2002 - 2004 were carried out by universities and laboratories for the Association of European Producers of Laminate Flooring (EPLF), to find which material produced the quietest room conditions.

With a **built-in Vapourstop barrier**, Timbermate Excel will help to protect against moisture. This eliminates the need for polythene sheeting.

Timbermate Excel underlay absorbs floor irregularities, helping **mask unevenness and minor surface blemishes** found in many surfaces.

With just the right amount of give, Timbermate Excel **protects** against the **overstraining** of wood and laminate floors.

MANUFACTURED IN THE U.K.
BY INTERFLOOR LTD.
www.interfloor.com

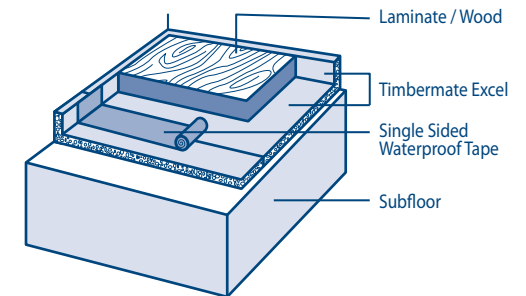
interfloor
INTERFLOOR LIMITED

Pack Contents

Roll Size: 1.37m x 11.0m Standard Roll

Technical Specifications

Thickness	3.60mm
Drum Sound Emission	56 SONE
Roll Weight	38.4kg Standard Roll
Fire Test	BS 4790 & BS 5287
Impact Sound Reduction	23dB



Single sided waterproof tape used in conjunction with the underlay, creates a new, moisture-resistant subfloor onto which the wood or laminate flooring is fitted (in accordance with the manufacturer's recommendations).

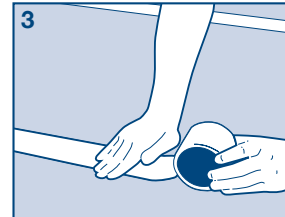
FITTING INSTRUCTIONS



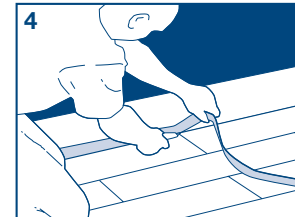
1 The subfloor must be level, sound, dry and free from dust, grease and other contaminants. Any loose floorboards must be nailed down and any protruding nails hammered down.



2 The underlay should be laid foil side down (essential to ensure maximum resistance to moisture from the subfloor) allowing a 5cm excess of underlay to run up the perimeter wall. Each roll of underlay should be closely butted-up.



3 Tape all joints with single sided waterproof tape and press firmly into place.



4 Once the flooring has been fully laid, trim the underlay to the top of the flooring, fit skirting or quadrant to finish.